



R/3® SYSTEM

Gain a competitive edge with this new solution designed specifically to address the challenges facing the process industry. Online information, flexibility and comprehensive, powerful functionality are the foundation of PP-PI. Benefit from these tools to streamline your production process and give your organization the ability to respond faster to changing market demands.

PRODUCT OVERVIEW...

PP-PI PRODUCTION PLANNING – PROCESS INDUSTRIES

THE PLANT SOLUTION THAT CLOSSES THE INFORMATION GAP

THE INFORMATION LINK THAT GUARANTEES REAL TRANSPARENCY AND CONTROL

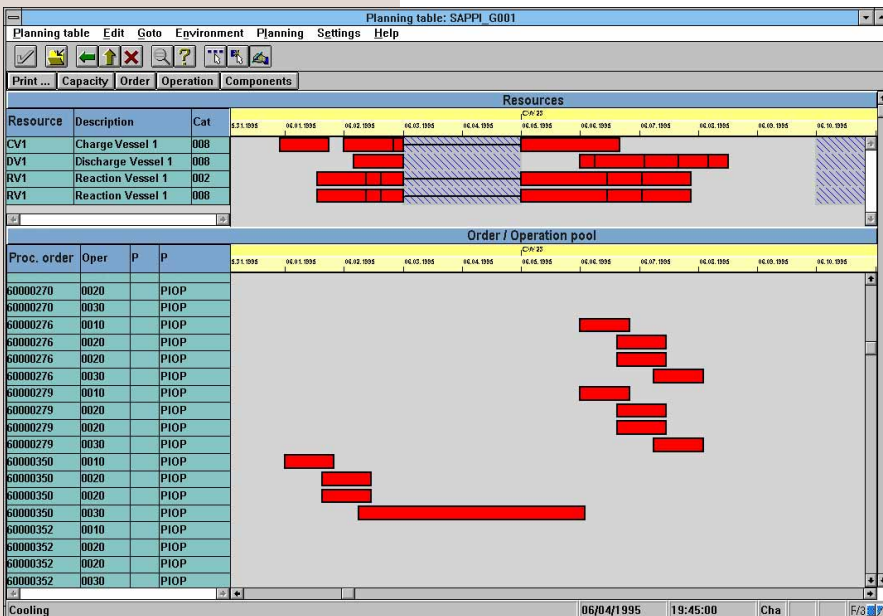
The PP-PI System is an innovative solution for process manufacturers, bridging the gap between the planning, control, and execution levels of your plant. Now you have a single high-performance system to assist all your staff: from plant managers and planning personnel through to your process engineers and plant operators. PP-PI is fully integrated with other SAP® R/3 System applications, Process Control Systems (PCS), your lab (LIMS), and Document Management Systems (DMS). The result? Ultimate transparency and a timely information flow. What's more, we have designed

PP-PI to comply with internationally recognized standards and environmental requirements.

NEW PERSPECTIVES FOR EFFICIENT RECIPE MANAGEMENT

Get a step ahead with PP-PI's recipe management system, designed especially to meet the ISA/SP88, Namur and EBF standards. A system that helps you plan all your production resources, defines process activities and assigns process specifications and control procedures.

In the recipe you can plan the entire set of resources required for the production process: lines, equipment, energy, personnel, storage, and transport. You can plan not only raw materials and intermediates but also by-products, co-products and waste. Operations and their respective phases can be charted quickly and easily. Sequences, processing times and relationships are easy to plan and are presented in a clear, graphical display. Process specifications and control requirements can be stored in user-definable process instructions from which the control recipe is generated. You can even incorporate hazard notes and SOPs to comply with health, safety and environmental standards. All of this means that you have extensive capabilities for smarter resource and material planning and a sound basis for scheduling, control and documentation of your processes.



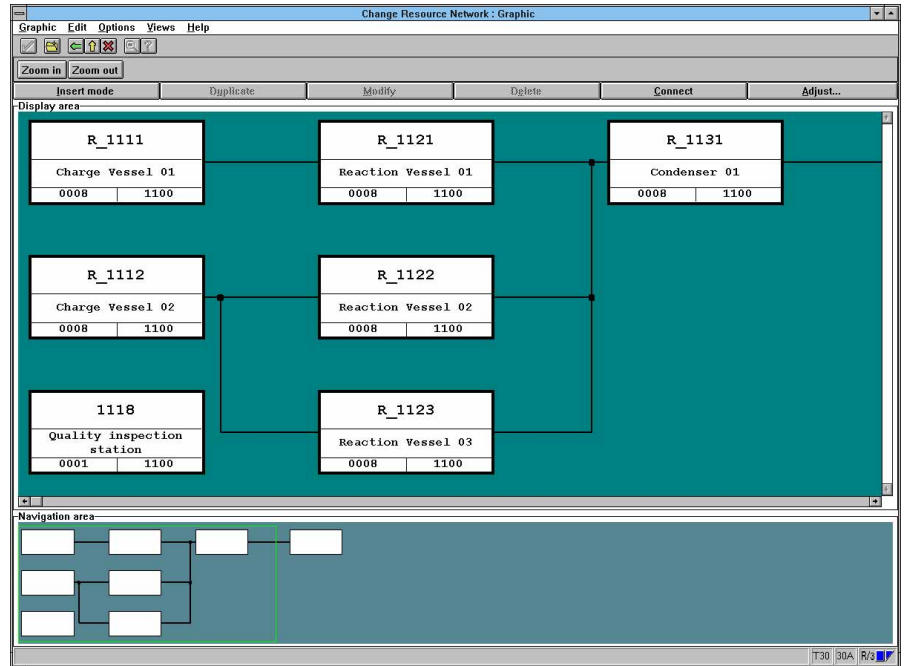
PP-PI PRODUCTION PLANNING – PROCESS INDUSTRIES

A CLEAR VISION OF PRIORITIES AND CONFLICTS THROUGH INTEGRATED SCHEDULING

For effective scheduling you need a system that takes account of the constraints imposed by inventory, lead times and capacity limitations. With PP-PI you can simplify scheduling and streamline production. How? Firstly, close integration with other R/3 System applications provides schedulers with the latest, online information on sales forecasts, customer specifications, production requirements as well as batch and resource availability. Secondly, with the interactive graphical planning table, your scheduler can quickly and easily carry out finite batch scheduling. The system determines the appropriate processing path through the production line using the resource network. Finally, timely updates from your PCSs and the lab enable better utilization of resources. In short, PP-PI gives you the tools to maximize process efficiency. Tools to optimize capacity and material utilization, minimize changeover cycles and cut operation costs.

CLOSE INTEGRATION ENSURES TIGHT QUALITY AND PROCESS CONTROL

PP-PI's configurable standard interfaces provide seamless integration with your PCSs, your lab (LIMS), and Document Management Systems (DMS) resulting in perfect coordination and online control of the production run. All process parameters and inspection characteristics vital for effective process execution and quality management are stored in process instructions, from which the control recipe is derived. In automated processes, the control recipe is sent asynchronously from PP-PI to your process systems. In the case of manual operations, interactive process instruction sheets are generated and sent to your line operators. Processing is monitored throughout the entire produc-



tion run and messages (such as actual process data for online update of the production schedule and quality data for further processing in R/3 Quality Management or your LIMS) are sent back to PP-PI. PP-PI automatically checks entries and transfers them to defined destinations.

POWERFUL TOOLS FOR DATA COLLECTION AND ANALYSIS

Key information and pertinent analyses are what you need to ensure that you detect problems and understand their origin at an early stage. SAP's ArchiveLink® to optical archive systems provides you not only with quick access to all recipe and process data but records all this information in the Electronic Batch Record according to GMP guidelines. You can obtain exactly the information you need, in the form you want it. Furthermore, the links to SAP Business Graphics and the Logistics Information System, MS Excel and MS Access provide powerful tools for cross-reference, data, and trend analysis.

THE PP-PI SYSTEM COMPRISES:

- Resource Management
- Recipe Management
- Process Planning
- Process Management
- Links to LIMS, PCS, and DMS
- Production Information Management

TECHNOLOGY AND SERVICE

R/3 software is based on Client/Server Architecture. R/3 is designed as an open system for use on operating systems from a variety of vendors. Along with the software, SAP offers you a complete spectrum of services: professional consulting in organizational and technical issues ranging from project planning to system implementation, qualified staff training, and 24-hour hotline support.

SAP's quality management system for software development meets the international ISO 9001 standards.

Find out more. Call or write us.

SAP HEADQUARTERS: SAP AG • P.O. Box 1461 • 69185 Walldorf • Germany • Tel.: +49.6227.343838 • Fax: +49.6227.343727

SAP INTERNATIONAL: Argentina: Buenos Aires • Australia: Sydney, Melbourne, Brisbane • Austria: Vienna, Linz, Salzburg • Belgium: Brussels • Brazil: Sao Paulo • Canada: Toronto, Calgary, Montreal
China: Beijing • Cyprus: Nicosia • Czech Republic: Prague, Bratislava • Denmark: Copenhagen • France: Paris • Hong Kong • Greece: Athens • Hungary: Budapest • Italy: Milan • Japan: Tokyo
Malaysia: Kuala Lumpur • Mexico: Mexico City • The Netherlands: Hertogenbosch • New Zealand: Auckland, Wellington • Norway: Hovik • Portugal: Lisboa • Russia: Moscow • Saudi Arabia: Jeddah, Dubai
Singapore • South Africa: Dunkeld West, Cape Town, Durban • Spain: Madrid, Barcelona • Sweden: Stockholm • Switzerland: Biel • Thailand: Bangkok • Turkey: Istanbul • U.K.: Middlesex

USA: Philadelphia, PA; Waltham, MA; Foster City, CA; Denver, CO; Irvine, CA; Kirkland, WA; Atlanta, GA; Irving, TX; Houston, TX; West Chester, IL; Minneapolis, MN