

Process messages can be selected and transferred to the XXL Listviewer, which you can call directly from PP-PI. The selection and display of data is specified in PP-PI, but it is possible to use all the processing tools provided by Microsoft in the EXCEL program.

The following figure illustrates the temperature curve of a vessel for different process orders over the time axis.

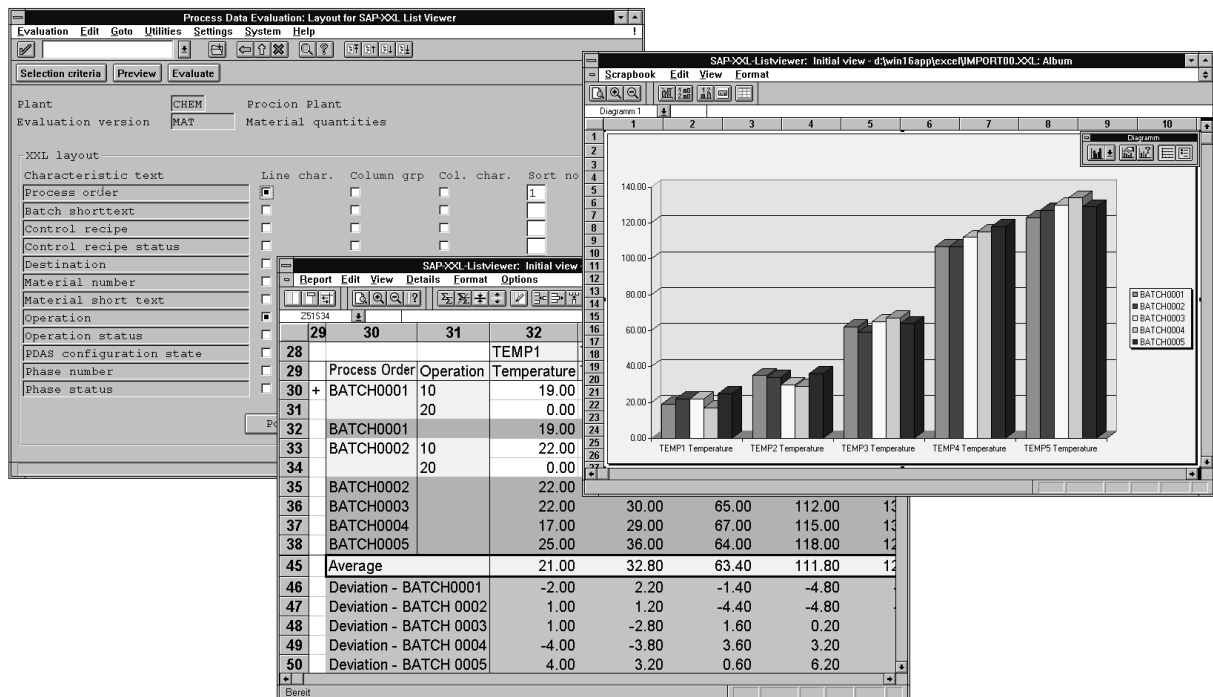


Fig. 11-5: Process message evaluations using the XXL Listviewer

With the above tools, it is possible to carry out ad-hoc or routine evaluations as needed.

Process data documentation and evaluation in PP-PI serve to log process events, report on resource utilization or malfunctions, as well as provide data for the purpose of analyzing and improving your production runs.

What is the difference between process data documentation and process data evaluation?

- ❑ Process data documentation refers to the logging and archiving of all process-related data according to legal requirements of the corresponding authority.
- ❑ Process data evaluation refers to the different evaluation tools enabling you to display and analyze process data in aggregated or list form.

What tools are available to evaluate and visualize process-related planned and actual data , as well as generate statistics for such data?

In order to evaluate your process-related data, you can use the Logistics Information System, the XXL Listviewer (together with Microsoft Excel) and the SAP Business Graphics component.

