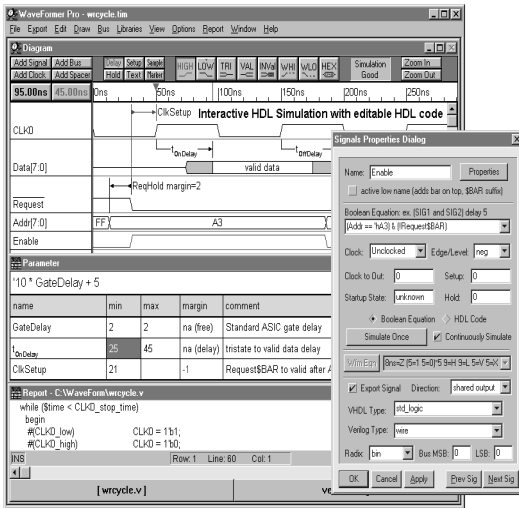


WaveFormer Pro and Test Control Programs

SynaptiCAD's WaveFormer Pro manages waveforms stimulus vectors for test and design engineers. WaveFormer augments the use of control program generators, like National's LabView, by providing a general purpose waveform editing and translation environment. With WaveFormer Pro engineers can import waveforms from a variety of sources including simulators, logic analyzers, spreadsheets, equation based, and graphically drawn waveforms. Waveformer can also export waveforms to generate stimulus vectors for testers, pattern generators, and simulators.

Generate Stimulus Vectors Annotate and Document Simulation Waveforms

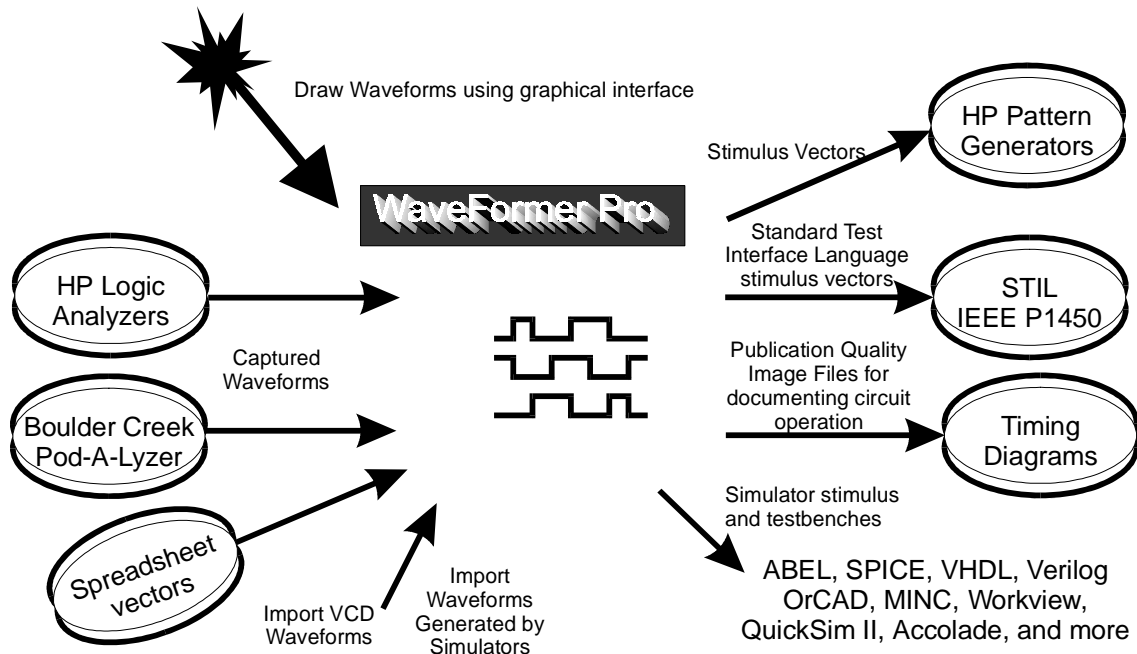


Import & Export Waveforms

WaveFormer Pro supports waveform input from a variety of sources including: drawing waveforms graphically in the timing diagram editor, numerical input from a spreadsheet, waveforms captured by HP's logic analyzers, and simulator output generated by a variety of simulators. Export waveforms as stimulus vectors.

Timing Diagram Editing

WaveFormer Pro is a graphical timing diagram editor with the ability to input and export waveforms. WaveFormer Pro lets you specify and analyze timing diagrams early in the design cycle, then take that same work and use it as stimulus for circuit simulation and testing. Create timing diagrams by drawing signals, clocks, buses, and simulating Boolean and registered logic signals. Graphical timing parameters like delays, setups, and holds actively move and monitor signal transitions.



For more information about WaveFormer Pro and TestBench Pro contact SynaptiCAD at (800)804-7073, www.syncad.com, or sales@syncad.com

SynaptiCAD, WaveFormer Pro, and TestBench Pro are trademarks of SynaptiCAD Inc. All other marks belong to their respective owners.